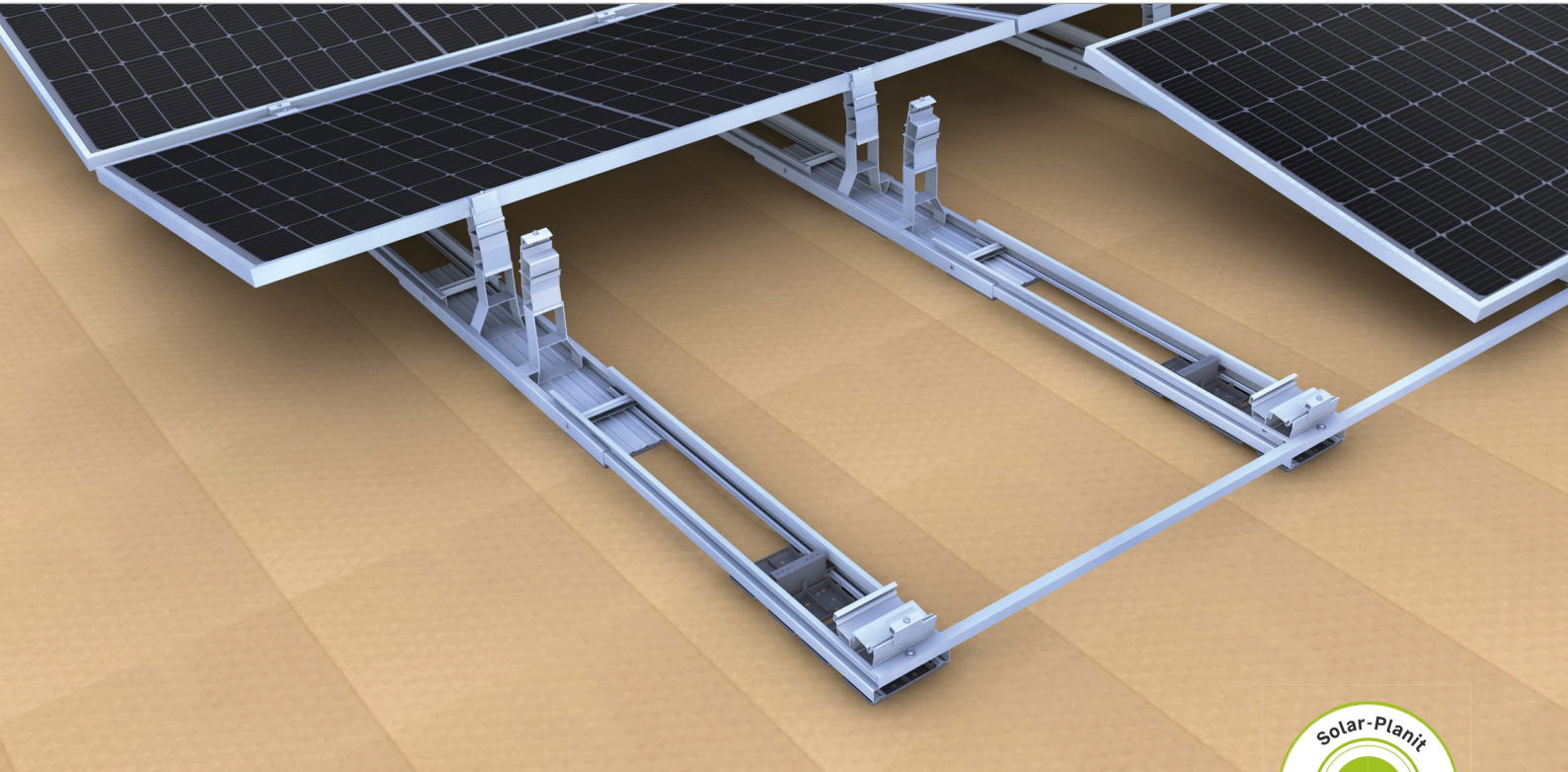
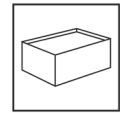


## Flat roof | East-West-System III Long side

Clamping on the long frame side of the modules for maximum loads



### Powerful performance and strong in all weather conditions

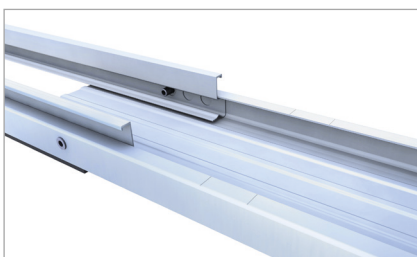
- Maximum utilisation of the roof surface and evenly distributed electricity production
- Efficient use of space thanks to 10° module inclination and landscape installation
- cross connections at module field edges for high stability

### Product variants

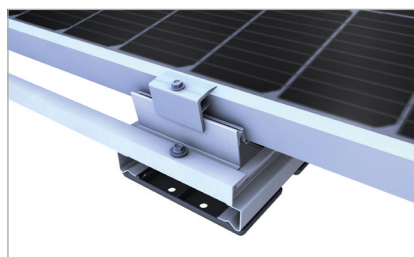
- Many optional components e.g. cable channels, ballast troughs and ballast cantilevers

## YOUR BENEFITS

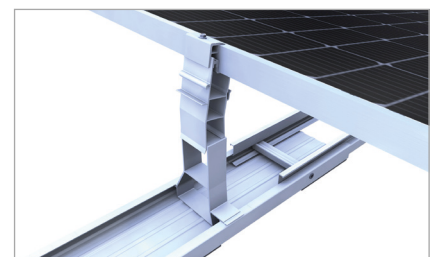
- Clamping of the module in the optimum area of the long frame side for maximum wind and snow loads, especially with large modules
- Low logistical effort and optimal handling thanks to short components
- Simple and quick installation due to high degree of pre-fabrication and tool-free click system
- Wind tunnel tested aerodynamics



Click mechanism for toolless connection



support brace



Module clamping mechanism









## Flat roof III: Optional components

