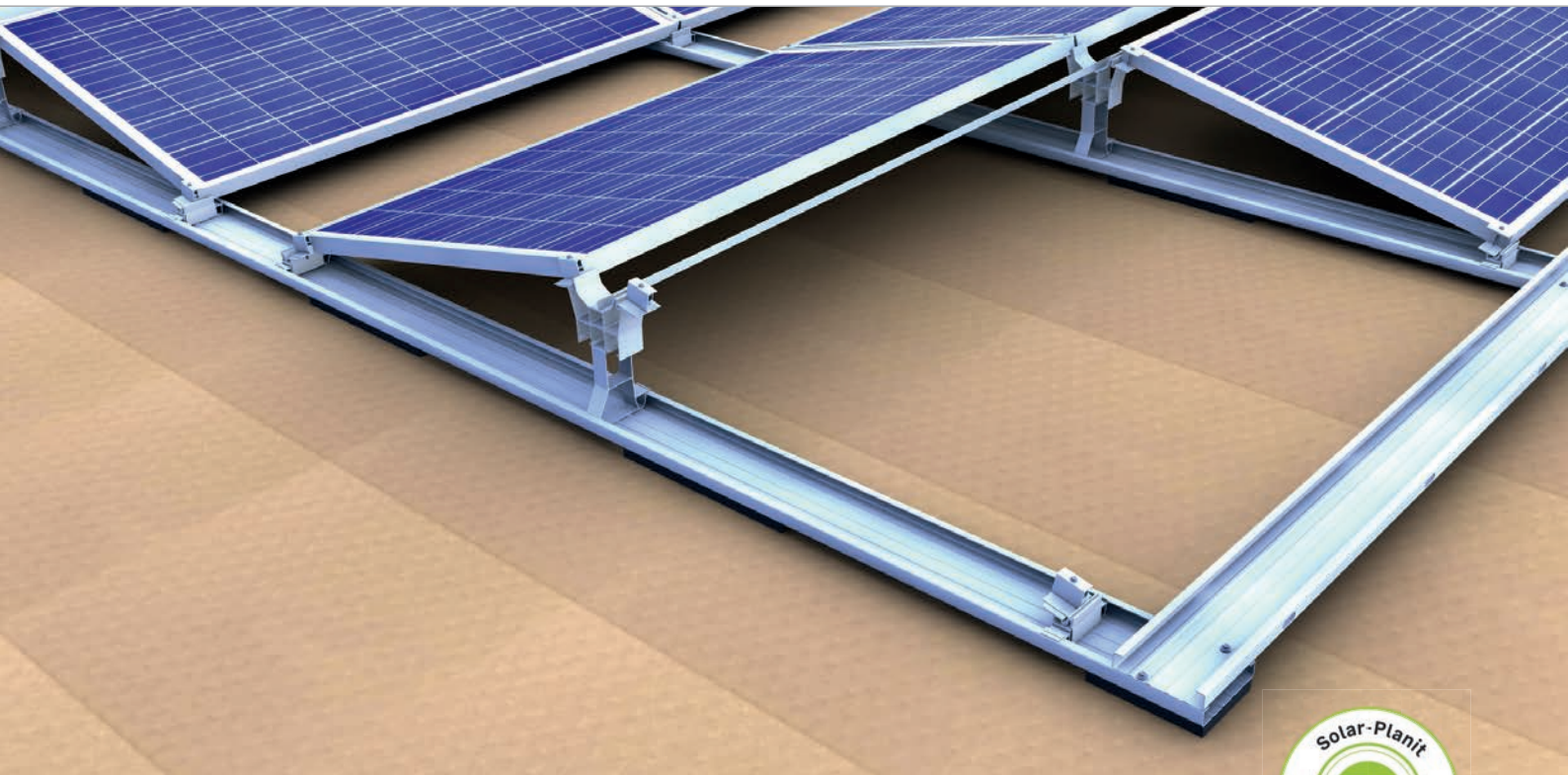
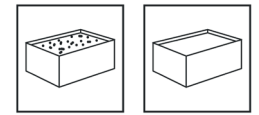


Flat roof | east-west system II

Flat roof system east-west II on foil



Our solution for east-west direction

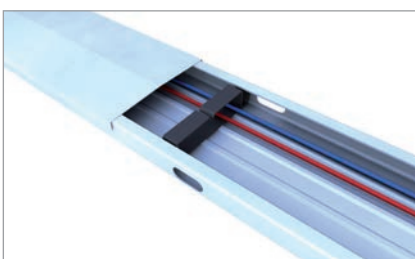
- aximum roof surface utilisation and evenly distributed electricity production
- optimum elevation angle 13° for good efficieny and self-cleaning
- cross connections at module field edges for high stability
- high flexibility thanks to individually selectable row distance
- connected module fields up 34 m length possible

Produktvarianten

- different base troughs: blank, with PE separation layer or with PE pads for cross drainage
- clamps for long frame side, e.g. third base trough for extreme snow and wind loads
- double support for heavy loads

Your benefits

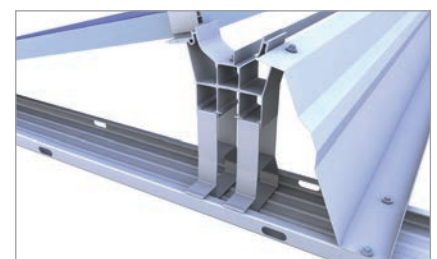
- wind-tunnel tested aerodynamics
- wide and continuous base troughs for optimum load redistribution and low surface pressure
- module supports and base feet with click-fit function – no screwing necessary
- suitable for wide modules



Base trough with cover and cable bracket

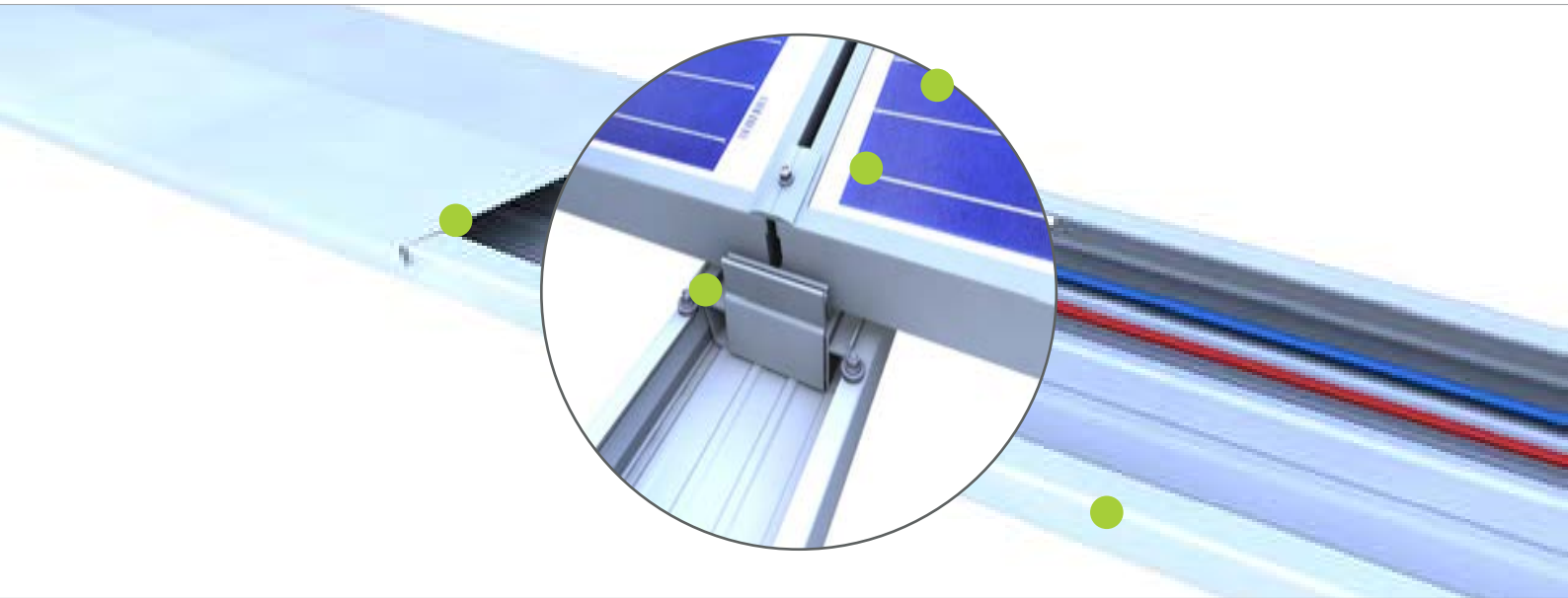


Base foot in base trough with connector



Wind deflector East-West for roof obstacles with module support double

” ••• Œ •- Œ ••



‰ •

Œ •
 < ’ ’ ’ •• - • • • •
 < ’ ’ •• -

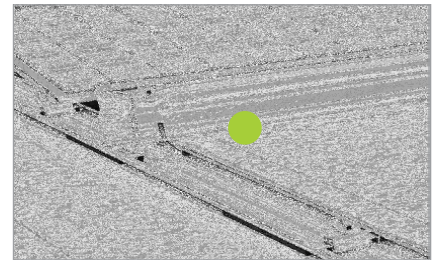
ž • • • f ’ • • •
 < • • • • • • • • • •
 < f ’ • • • • • - • •

Œ •••
 < ‘ ’ ’ •• - • • • -
 < ’ • • • • • Œ ’ • •

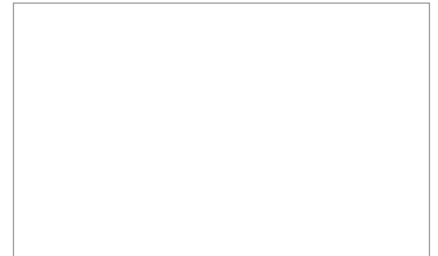
“ • • •
 < ‘ ’ ’ •• - • • • -
 < ’ • • • • • Œ ’ • •

“ • • •
 < Œ ’ • • • Œ Œ
 < - - •• Œ Œ

••• • • • • • • •
 < •• • • • • • • • •
 < “ • • • • •



Œ • f •



Œ ••• • - ’

