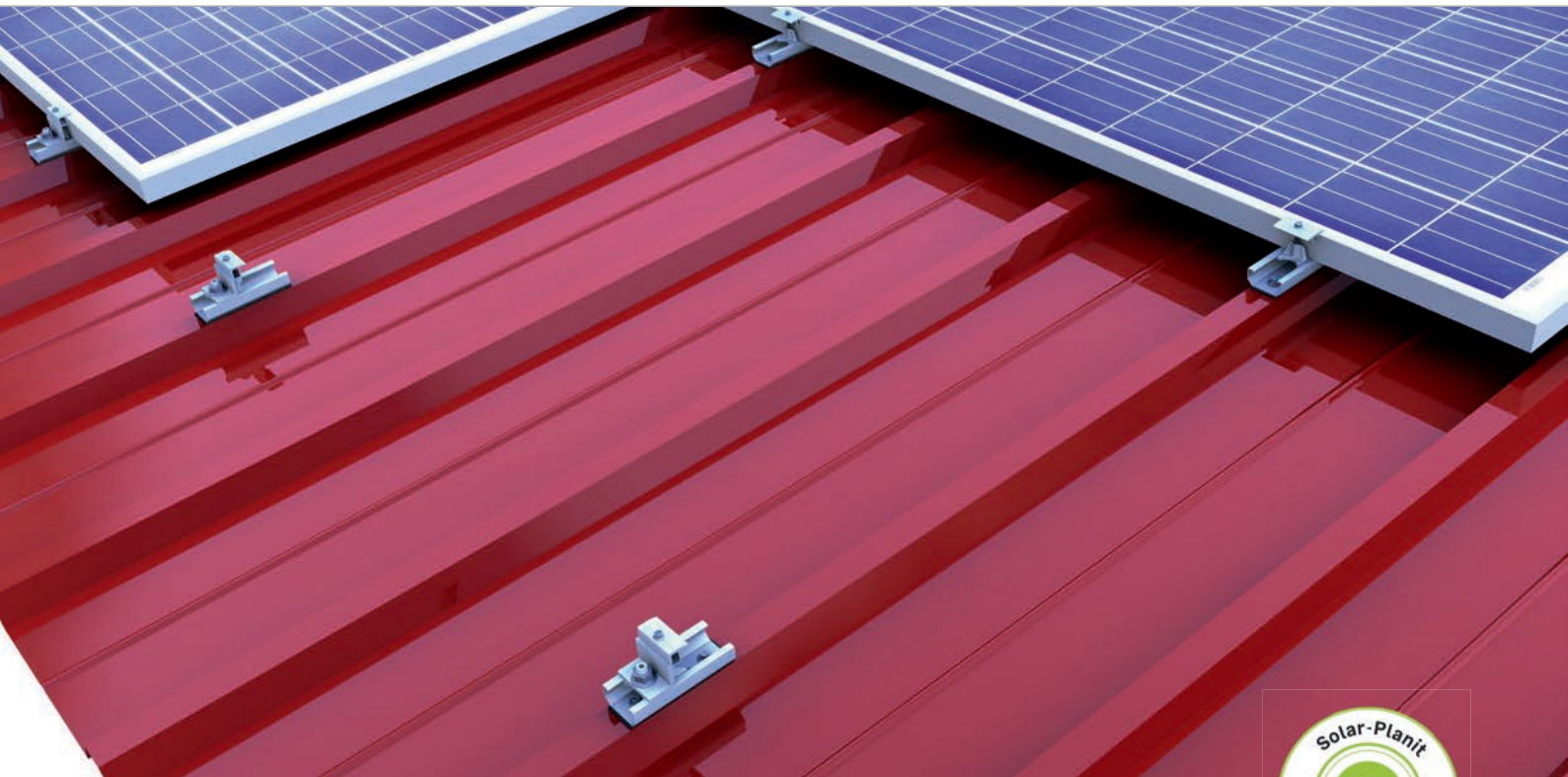
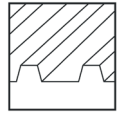


## Trapezoidal metal roof | clamping system

Clamping system with direct fixing and modules installed in landscape



### Pre-assembled components – quick assembly

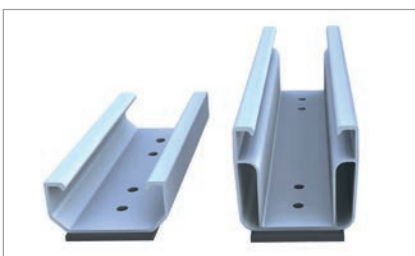
- most cost effective mounting option on trapezoidal roof
- reduced logistical effort on the roof
- quick and efficient mounting from above
- electrically conductive connection between the mounting system and the roof membrane

### product variants

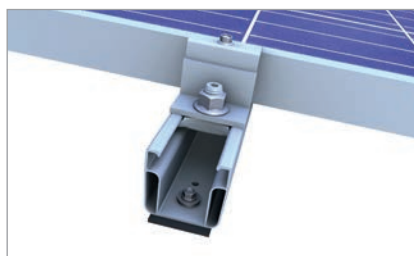
- short rail C24 for the yield-optimised installation or the project business
- short rail C47 for excellent module rear ventilation with extra space to the roof covering

### Your benefits

- only a handful of components, entirely pre-assembled
- low material costs and easy handling
- high holding forces thanks to chipless direct fixing with building authority-approved thin sheet screws
- only one mounting tool necessary



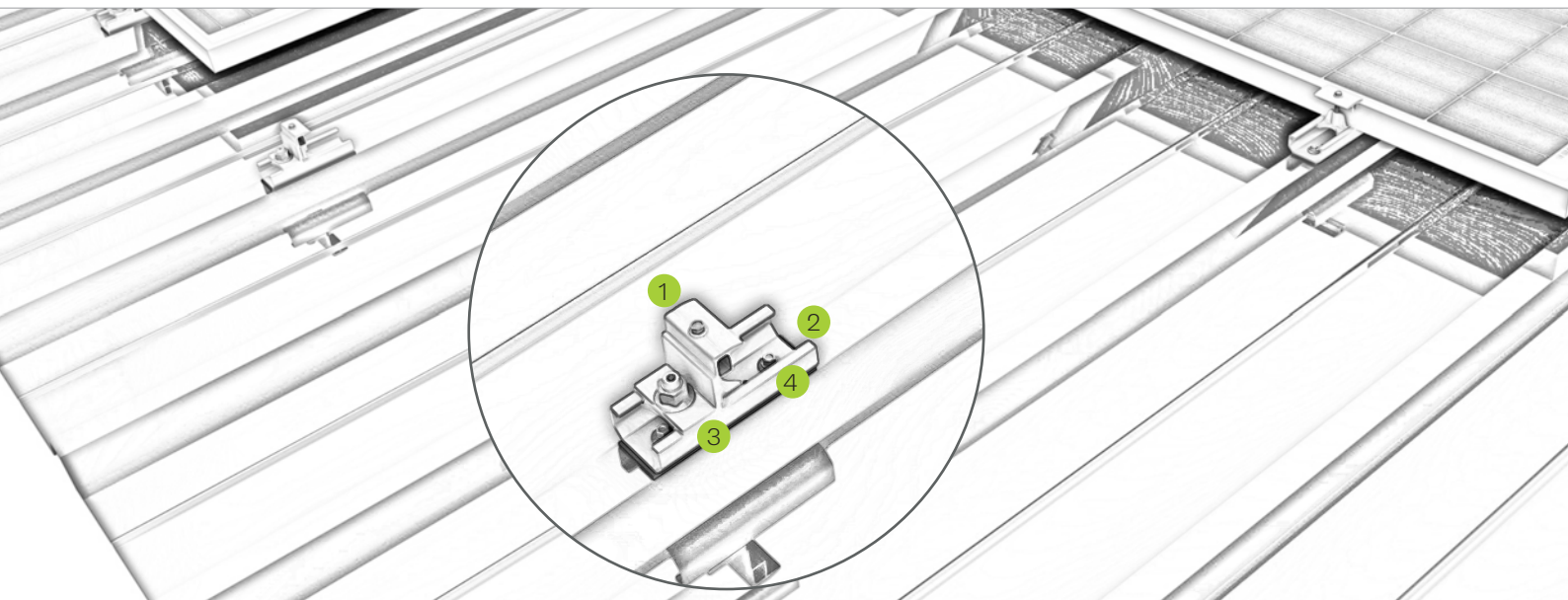
Short rail variations with EPDM seal



Slip guard on short rail for landscape



Hole pattern short rail for landscape

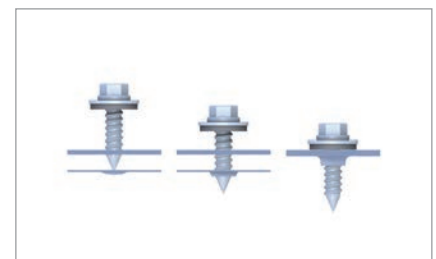


## Pic Designation

- 1
**Middle and end clamp**
  - for frame heights of 30-42 mm and 43-52 mm
  - available in blank and black anodized
- 2
**Short rail**
  - material-saving fixation on the raised bead
  - entirely pre-assembled with EPDM-sealing and perforations
- 3
**Slip guard**
  - mounting aid for the lowest module row
  - additional securing of modules
- 4
**Mounting screw**
  - building authority-approved for chipless direct fixing
  - high holding forces thanks to funnel formation



Short rail C 33 for corrugated metal sheets



Chipless screwing for high holding forces

Mounting video



novotegra GmbH  
 Eisenbahnstraße 150 | 72072 Tübingen | Deutschland  
 Tel. +49 7071 98987-0, info@novotegra.com  
 www.novotegra.com

Subject to changes and errors excepted.  
 Last updated: April 2021 / TP